

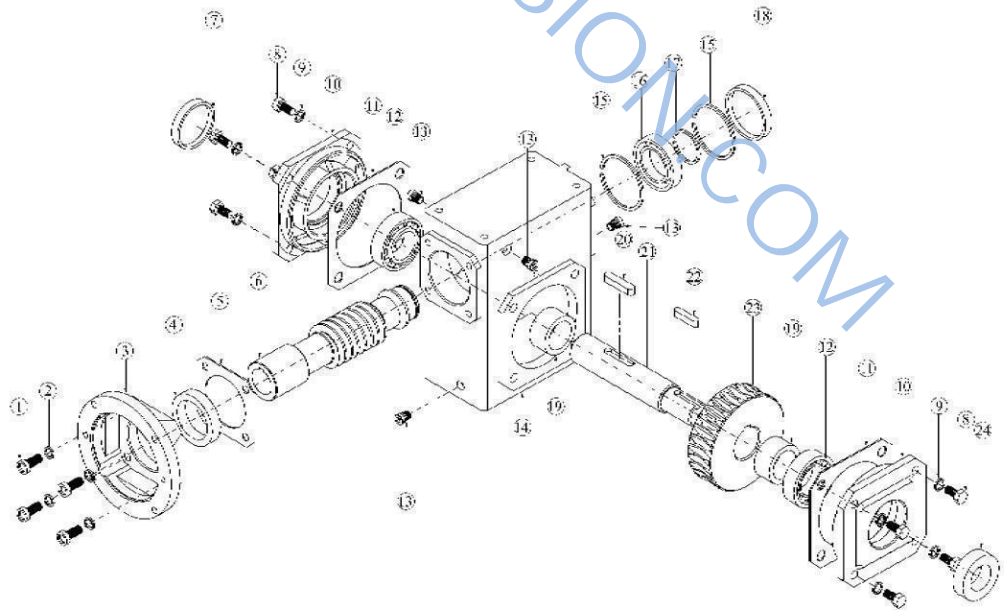
## Size Chart

UY .....	3
QY .....	4

WWW.SC-TRANSMISSION.COM

## QY

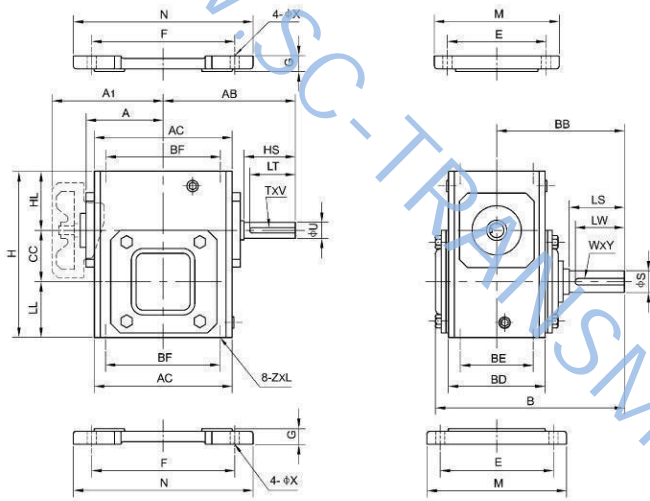
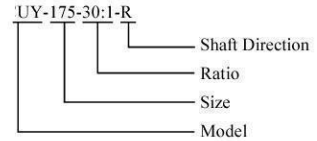
NO.	Parts
1	Intl. hex
2	Spring washer
3	Flange
4	Oil seal
5	Gasket
6	Worm shaft
7	Seal cover
8	Hex. bolt
9	Spring washer
10	Output shaft
11	Gasket
12	Bearing
13	Oil plug
14	Frame
15	Snap ring
16	Bearing
17	Snap ring
18	Seal cover
19	Shaft sleeve
20	Key
21	Output shaft
22	Key
23	Worm wheel
24	Oil seal



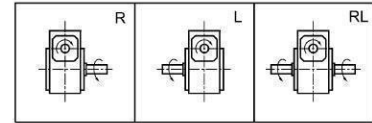
# UY



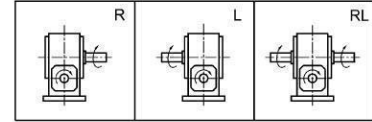
### How to order



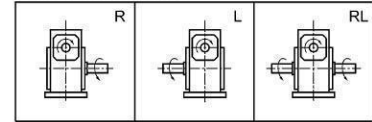
#### UY Shaft Direction



#### UAY Shaft Direction



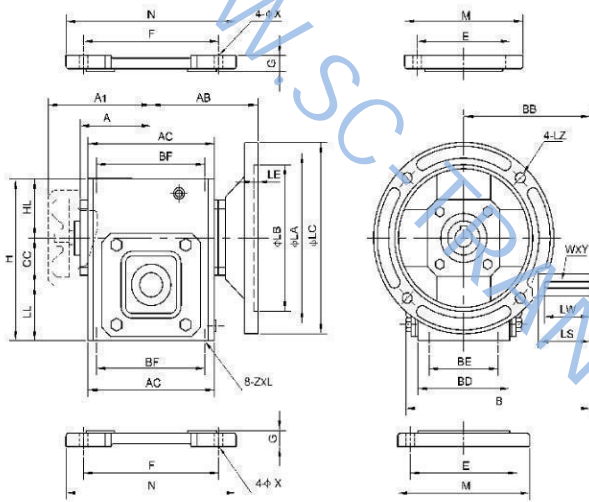
#### USY Shaft Direction



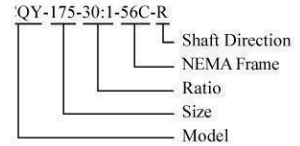
Size	Ratio	A	A <sub>1</sub>	AB	AC	B	BB	BD	BE	BF	CC	H	HL	LL	Z	L
133	5:1	2.12		4.03	4.00	6.03	4.00	2.88	2.00	3.25	1.333	4.66	1.61	1.72	5/16-18	0.50
154		2.75		4.69	5.13	6.76	4.31	3.69	2.75	4.19	1.540	5.38	1.92	1.91	5/16-18	0.50
175	10:1	2.75		4.69	4.81	6.75	4.31	3.38	2.75	4.19	1.750	5.75	1.94	2.06	5/16-18	0.60
206		3.00		5.06	5.50	7.25	4.69	3.75	2.88	5.00	2.062	6.38	2.04	2.28	3/8-16	0.60
237	15:1	3.56		5.44	6.13	7.78	5.08	4.06	2.88	5.00	2.375	6.94	2.07	2.50	3/8-16	0.60
262		3.69		6.23	7.12	8.50	5.63	4.44	3.38	6.38	2.625	8.00	2.44	2.94	3/8-16	0.60
300	30:1	4.50	5.93	7.00	8.50	10.25	6.75	5.50	4.00	7.00	3.000	8.88	2.63	3.25	7/16-14	0.80
325		4.50	5.93	7.06	8.50	10.50	7.06	5.00	4.00	7.50	3.250	9.38	2.63	3.50	7/16-14	0.80
375	50:1	5.75	7.42	8.36	9.50	11.88	7.75	6.38	4.75	8.50	3.750	10.44	2.81	3.88	1/2-13	1.00
450		5.63	8.11	9.59	10.88	13.16	8.44	7.38	5.81	9.56	4.500	11.94	2.94	4.50	5/8-11	1.00
516	60:1	6.44	8.92	10.69	12.50	13.91	9.06	7.38	5.81	11.00	5.167	13.75	3.28	5.31	5/8-11	1.00
600		7.44	10.70	11.75	14.50	15.31	10.00	8.13	6.38	12.75	6.000	16.50	4.00	6.50	5/8-11	1.00

Size	Input Shaft				Output Shaft				With Horizontal Base						
	U	HS	T × V	LT	S	LS	W × Y	LW	E	F	M	N	G	X	
133	0.500	1.81	1/8 × 1/16	1.38	0.625	2.00	3/16 × 3/32	1.31	3.31	4.38	4.19	5.38	0.53	0.34	
154	0.625	1.69	3/16 × 3/32	0.94	0.750	1.78	3/16 × 3/32	0.88	4.31	5.25	5.44	6.44	0.59	0.41	
175	0.625	1.81	3/16 × 3/32	1.50	0.875	1.88	3/16 × 3/32	1.00	4.50	5.75	5.56	7.00	0.69	0.41	
206	0.625	1.81	3/16 × 3/32	1.50	1.000	2.00	1/4 × 1/8	1.75	4.69	6.38	5.76	7.69	0.72	0.47	
237	0.750	1.94	3/16 × 3/32	1.31	1.125	2.37	1/4 × 1/8	1.38	4.88	7.06	6.19	8.50	0.75	0.47	
262	0.750	2.31	3/16 × 3/32	1.88	1.125	2.50	1/4 × 1/8	2.00	5.25	8.00	6.50	9.25	0.75	0.53	
300	0.875	2.26	3/16 × 3/32	1.31	1.250	3.25	1/4 × 1/8	2.25	5.88	8.44	7.36	10.16	0.88	0.53	
325	0.875	2.31	3/16 × 3/32	1.65	1.375	3.25	5/16 × 5/32	2.41	6.13	9.50	7.75	11.12	0.88	0.53	
375	1.000	2.91	1/4 × 1/8	1.75	1.625	3.50	3/8 × 3/16	2.19	7.00	10.38	8.63	12.00	0.94	0.59	
450	1.125	3.45	1/4 × 1/8	2.50	1.625	3.66	3/8 × 3/16	2.50	7.63	12.13	9.33	13.88	1.13	0.66	
516	1.250	3.75	1/4 × 1/8	2.56	2.000	4.16	1/2 × 1/4	2.81	8.38	14.13	10.38	16.38	1.13	0.78	
600	1.500	3.75	3/8 × 3/16	2.94	2.250	4.56	1/2 × 1/4	3.38	9.50	16.50	12.00	19.00	1.25	0.91	

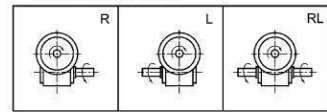
# QY



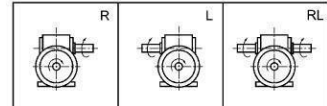
### How to order



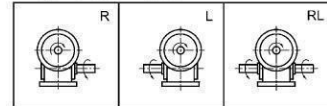
### QY Shaft Direction



### QAY Shaft Direction



### QSY Shaft Direction



NEMA Frame	LA	LB	LC	LE	LZ	Input	
						Bore	Keyway
56C	5.875	4.50	6.50	0.16	0.43	0.625	3/16 × 3/32
143TC/145TC	5.875	4.50	6.50	0.16	0.43	0.875	3/16 × 3/32
182TC/184TC	7.250	8.50	9.00	0.23	0.55	1.125	1/4 × 1/8
213TC/215TC	7.250	8.50	9.00	0.23	0.55	1.375	5/16 × 5/32

Size	Ratio	A	A <sub>1</sub>	AB	AC	B	BB	BD	BE	BF	CC	H	NEMA Frame
133	5:1	2.12		3.96	4.00	6.03	4.00	2.88	2.00	3.25	1.333	4.66	56C
154		2.75		4.50	5.13	6.76	4.31	3.69	2.75	4.19	1.540	5.38	56C
175		2.75		4.37	4.81	6.75	4.31	3.38	2.75	4.19	1.750	5.75	56C
206		3.00		4.76	5.50	7.25	4.69	3.75	2.88	5.00	2.062	6.38	56C
237		3.56		5.10	6.13	7.78	5.08	4.06	2.88	5.00	2.375	6.94	56C, 140TC
262	10:1	3.69		5.69	7.12	8.50	5.63	4.44	3.38	6.38	2.625	8.00	56C, 140TC, 180TC
300	15:1	4.50	5.93	5.67	8.50	10.25	6.75	5.50	4.00	7.00	3.000	8.88	56C, 140TC
	6.45			180TC									
325	30:1	4.50	5.93	5.69	8.50	10.50	7.06	5.00	4.00	7.50	3.250	9.38	56C, 140TC
	6.47			180TC									
375	40:1	5.75	7.42	6.01	9.50	11.88	7.75	6.38	4.75	8.50	3.750	10.44	56C, 140TC
	6.79			180TC, 210TC									
450	50:1	5.63	8.11	6.69	10.88	13.16	8.44	7.38	5.81	9.56	4.500	11.94	140TC
	7.47			180TC, 210TC									
516	60:1	6.44	8.92	8.28	12.50	13.91	9.06	7.38	5.81	11.00	5.167	13.75	180TC, 210TC
600		7.44	10.70	9.68	14.50	15.31	10.00	8.13	6.38	12.75	6.000	16.50	180TC, 210TC

Size	HL	LL	Z	L	Output Shaft				With Horizontal Base					
					S	LS	W × Y	LW	E	F	M	N	G	X
133	1.61	1.72	5/16-18	0.50	0.625	2.00	3/16 × 3/32	1.31	3.31	4.38	4.19	5.38	0.53	0.34
154	1.92	1.91	5/16-18	0.50	0.750	1.78	3/16 × 3/32	0.88	4.31	5.25	5.44	6.44	0.59	0.41
175	1.94	2.06	5/16-18	0.60	0.875	1.88	3/16 × 3/32	1.00	4.50	5.75	5.56	7.00	0.69	0.41
206	2.04	2.28	3/8-16	0.60	1.000	2.00	1/4 × 1/8	1.75	4.69	6.38	5.76	7.69	0.72	0.47
237	2.07	2.50	3/8-16	0.60	1.125	2.37	1/4 × 1/8	1.38	4.88	7.06	6.19	8.50	0.75	0.47
262	2.44	2.94	3/8-16	0.60	1.125	2.50	1/4 × 1/8	2.00	5.25	8.00	6.50	9.25	0.75	0.53
300	2.63	3.25	7/16-14	0.80	1.250	3.25	1/4 × 1/8	2.25	5.88	8.44	7.36	10.16	0.88	0.53
325	2.63	3.50	7/16-14	0.80	1.375	3.25	5/16 × 5/32	2.41	6.13	9.50	7.75	11.12	0.88	0.53
375	2.81	3.88	1/2-13	1.00	1.625	3.50	3/8 × 3/16	2.19	7.00	10.38	8.63	12.00	0.94	0.59
450	2.94	4.50	5/8-11	1.00	1.625	3.66	3/8 × 3/16	2.50	7.63	12.13	9.33	13.88	1.13	0.66
516	3.28	5.31	5/8-11	1.00	2.000	4.16	1/2 × 1/4	2.81	8.38	14.13	10.38	16.38	1.13	0.78
600	4.00	6.50	5/8-11	1.00	2.250	4.56	1/2 × 1/4	3.38	9.50	16.50	12.00	19.00	1.25	0.91